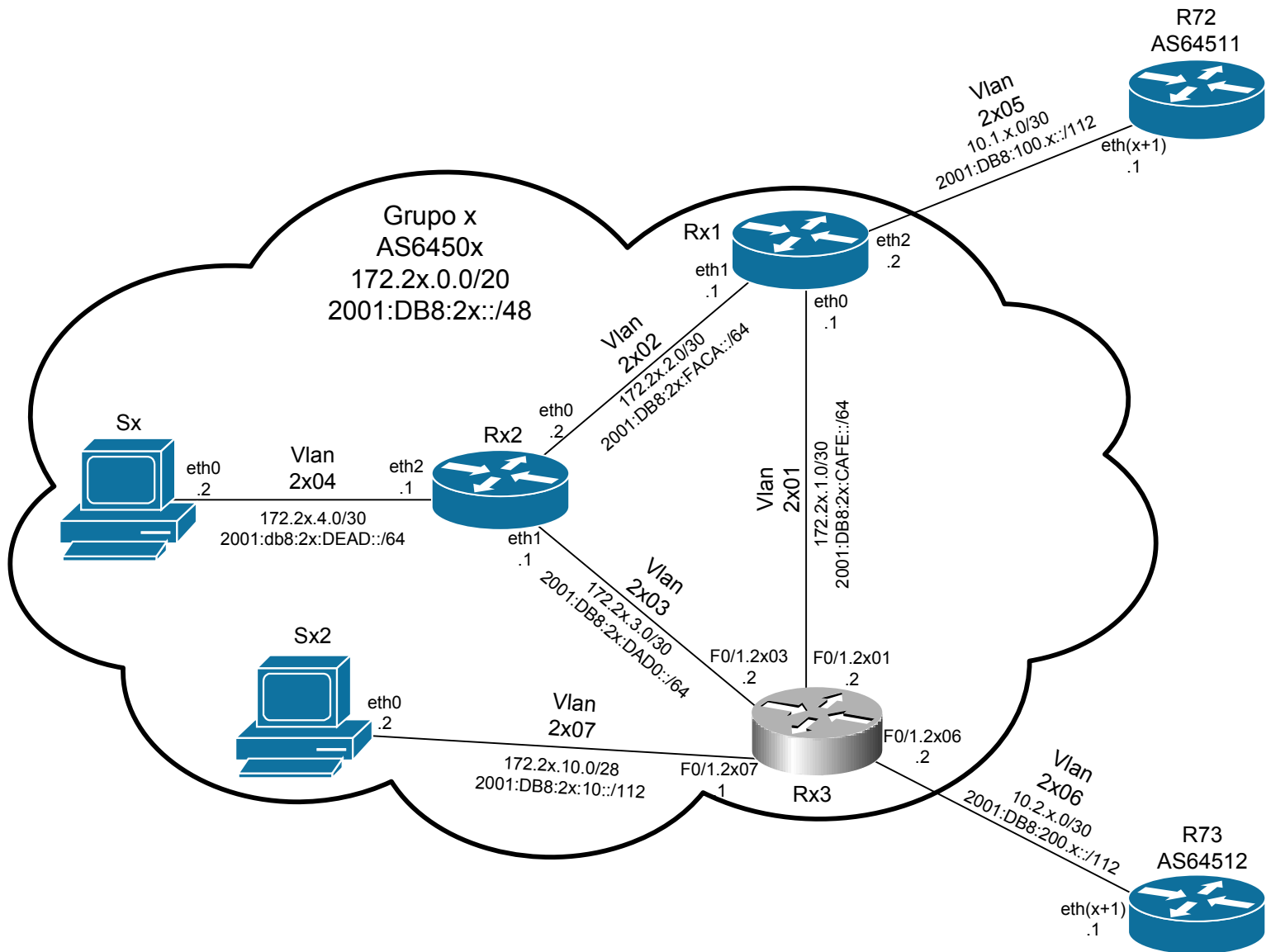


Laboratório de IPv6 Grupos



Sx		
Interface	IPv4	IPv6
eth0	172.2x.4.2/30	2001:DB8:2x:DEAD::2/64

Sx2		
Interface	IPv4	IPv6
eth0	172.2x.10.2/28	2001:DB8:2x:10::2/112

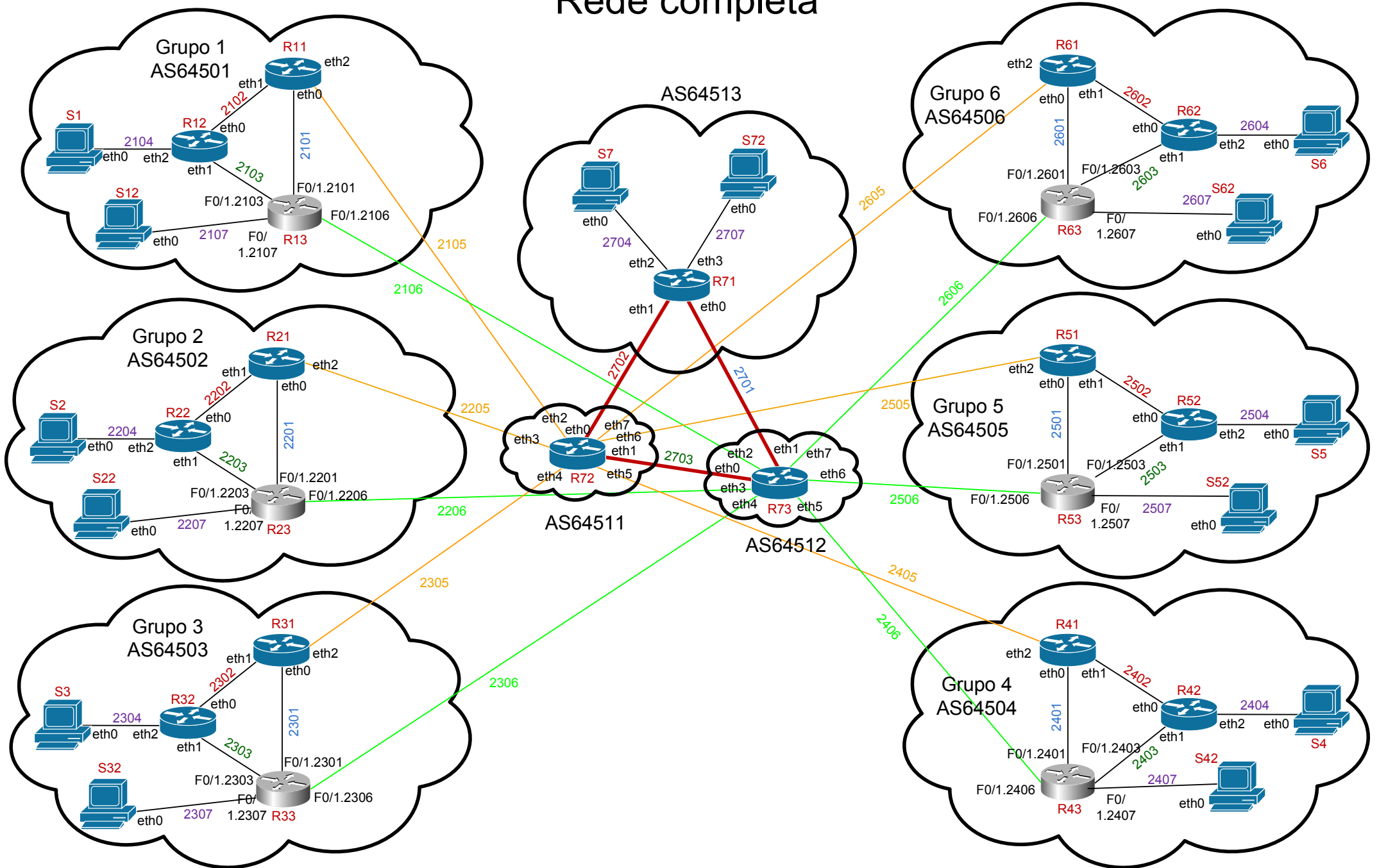
Rx1		
Interface	IPv4	IPv6
eth0	172.2x.1.1/30	2001:DB8:2x:CAFE::1/64
eth1	172.2x.2.1/30	2001:DB8:2x:FACA::1/64
eth2	10.1.x.2/30	2001:DB8:100.x::2/112
lo0	172.2x.15.255/32	2001:DB8:2x:FFFF::255/128

Rx2		
Interface	IPv4	IPv6
eth0	172.2x.2.2/30	2001:DB8:2x:FACA::2/64
eth1	172.2x.3.1/30	2001:DB8:2x:DAD0::1/64
eth2	172.2x.4.1/30	2001:DB8:2x:DEAD::1/64
lo0	172.2x.15.254/32	2001:DB8:2x:FFFF::254/128

Rx3			
Interface	IPv4	IPv6	Obs.
F0/1.2x01	172.2x.1.2/30	2001:DB8:2x:CAFE::2/64	
F0/1.2x03	172.2x.3.2/30	2001:DB8:2x:DAD0::2/64	
F0/1.2x06	10.2.x.2/30	2001:DB8:200.x::2/112	
loopback10	172.2x.15.253/32	2001:DB8:2x:FFFF::253/128	Router ID
loopback20	172.2x.15.252/32	2001:DB8:2x:FFFF::252/128	iBGP
loopback30	172.2x.15.251/32	2001:DB8:2x:FFFF::251/128	eBGP

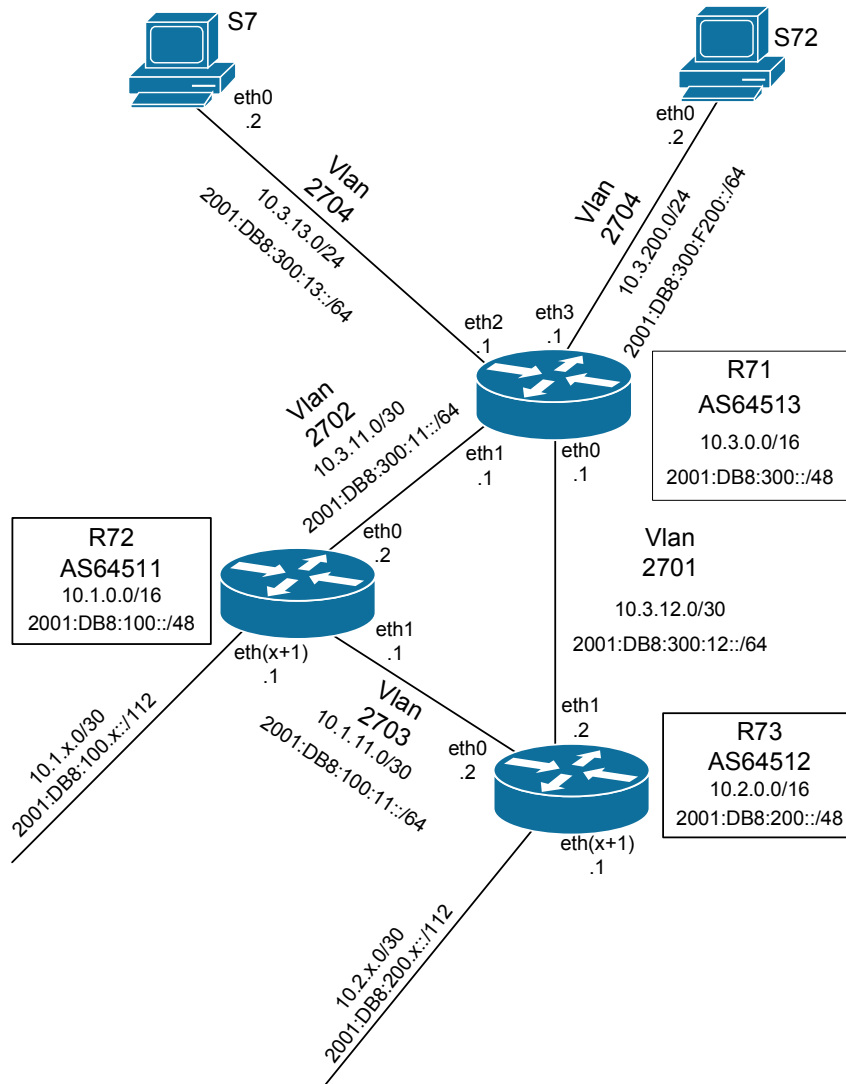
Laboratório de IPv6

Rede completa



Laboratório de IPv6

Núcleo



S7		
Interface	IPv4	IPv6
eth0	10.3.13.2/24	2001:DB8:300:13::2/64

S72		
Interface	IPv4	IPv6
eth0	10.3.200.2/24	2001:DB8:300:F200::2/64

R71		
Interface	IPv4	IPv6
eth0	10.3.12.1/30	2001:DB8:300:12::1/64
eth1	10.3.11.1/30	2001:DB8:300:11::1/64
eth2	10.3.13.1/30	2001:DB8:300:13::1/64
eth3	10.3.200.1/24	2001:DB8:300:F200::1/64
lo0	10.3.255.255/32	2001:DB8:300:FFFF::255/128

R72		
Interface	IPv4	IPv6
eth0	10.3.11.2/30	2001:DB8:300:11::2/64
eth1	10.1.11.1/30	2001:DB8:100:11::1/64
ethx	10.1.x.1/30	2001:DB8:100:x::1/112
lo0	10.1.255.255/32	2001:DB8:100:FFFF::255/128

R73		
Interface	IPv4	IPv6
eth0	10.1.11.2/30	2001:DB8:100:11::2/64
eth1	10.3.12.2/30	2001:DB8:300:12::2/64
ethx	10.2.x.1/30	2001:DB8:200:x::1/112
lo0	10.2.255.255/32	2001:DB8:200:FFFF::255/128